

JUNE 1980

CUMBERLAND
AREA
HEALTH
EDUCATION
CENTER

ANNUAL
PROGRAM REPORT

C
UMAB
TEC
C

*Working to improve health care through
health manpower education in
Allegany, Garrett, and Washington Counties.*

ANNUAL MESSAGE

This has been the Center's fifth year of operation. Each of these years has been characterized by various emphases and concerns. This year the focus has been the reorganization of the Center from being a subset of the University of Maryland at Baltimore to being a private nonprofit corporation. Much time and energy have been expended by members of CAHEC in planning the new organizational structure which is to be operational July 1, 1980.

Programmatically, CAHEC has concentrated on developing interdisciplinary education programs which are described in this report. Each caucus has contributed freely to help shape the program and financial planning for the months ahead. The challenge in the new year will be to implement the plans and perspectives generated by increased awareness of needs for professional health education services.

The purpose of CAHEC's work is generating and maintaining improved care for the client and consumer. Its philosophy is that a health care team must approach each individual as a total person. This is not always a common practice today. CAHEC believes this goal can be reached with health care students interacting in the educational process; the independent practitioner can also continue to learn from interdisciplinary education processes and thereby strengthen his or her contribution to the well-being of total persons.

A good foundation is well established. CAHEC now needs only to build on that foundation.



Marjorie M. Fawcett, Chairman
CAHEC Advisory Council

SUMMARY OF ACTIVITIES

Romeo Maione has stated, "We are living in a world of permanent change." This perspective has been indeed substantiated by the changes in the Cumberland Area Health Education Center (CAHEC) during the past year. CAHEC, which has become a corporate entity with new bylaws, has experienced change in staff leadership, added two professional staff and embarked on several planning procedures for expanding health manpower education services in Western Maryland.

CAHEC is one of three operational Area Health Education Centers in the Maryland Statewide Medical Education and Training System (MSMETS). CAHEC provided seven basic functions and services in its program year beginning July 1, 1979. These seven functions and services listed below were in compliance with the Health Professions Education Assistance Act of 1976 (Public Law 94-484) and the MSMETS legislation.

1. Continued the development of the organization as an entity separate from the University of Maryland at Baltimore (UMAB) as required by the Federal statutes.
2. Provided placement services for 24 UMAB students/residents for a total period of 72 months.
3. Organized faculty development and continuing educational events and services for the summer and fall of 1980.
4. Finalized plans for publishing a comprehensive newsletter to keep CAHEC preceptors up-to-date

with events and services sponsored by CAHEC and to provide a learning resource available to area health professionals.

5. Completed plans for organizing a supplemental library service, which includes a Med-Line hook-up to perform on-site computerized bibliographic search.
6. Continued and expanded instruction and consultation services.
7. Planned for consumer and provider survey elements in a manpower needs assessment. This process will involve making contact with a random area sample of approximately 150 households in the service area.

PLACEMENT SERVICES

During this fiscal year, CAHEC has given priority to the student/resident placement services part of its program. The primary thrust of the interdisciplinary program has been the reorganization of the curriculum which was begun in September and October, 1979, and brought to its present form by January, 1980. This curriculum is now a seven point program which includes the following elements:

1. Orientation to health needs in the service area and to AHEC
2. Tour of rural health care settings
3. Elective site visitations
4. Interviews with other health professionals
5. Seminars
6. Case presentations
7. Assessment

The purpose of the reorganized curriculum has been 1) to develop a more effective methodology for meeting interdisciplinary curriculum goals; 2) to assist residents and students in becoming more familiar with the diversity of living environments of the residents of the service area; 3) to facilitate increased exposure to formal information about the services in the CAHEC area; 4) to foster interdisciplinary planning of events and topics by students/residents themselves; and 5) to encourage increased exchange of information and perceptions among the program participants.

A second priority for AHEC for FY 1980 has been the continuation of instruction and consultation services particularly in services related to pharmacy and social work. Instructional services have been provided to undergraduate pharmacy students and consultation services have been provided to area medical and pharmacy professionals by the CAHEC Clinical Pharmacist. The Social Work staff has provided assistance to local professionals to keep them aware of the opportunities available to them through the UMAB School of Social Work and Community Planning. In addition, individual consultation and instruction have been provided to the master's level social work students placed in the Cumberland area.

AREA INFORMATION AND EDUCATION

A third priority for this program year has been the development of informational and educational services for preceptors working with the CAHEC program and also for other area health professionals. The new Information Specialist will have the responsibility of providing informational services. Among the services provided are: a comprehensive bi-monthly newsletter and calendar of events which will provide up-to-date information on resources at the CAHEC library as well as keep area health personnel informed on CAHEC and health education events throughout the service area; current news releases; and a supplemental resource library facility, including a Med-line hookup to perform on-site computerized bibliographic search.

The new Health Education Coordinator will be responsible for educational services. These services will include the development of continuing education events from an interdisciplinary approach. Symposia are being planned on the following topics: nutrition, transactional analysis, organic brain syndrome, sexual dysfunction, pain control, stress, gastroenterology and general principles of clinical teaching. A program under consideration is the providing of grand rounds for medical personnel.

NEW ORGANIZATION

On January 23, 1980, the CAHEC Advisory Council decided to incorporate the center as a private nonprofit corporation. The Committee on CAHEC Entity, chaired by Kery Hummel, reached the decision after several months of study and deliberation regarding the need for CAHEC to comply with Federal AHEC legislation, which requires that AHEC centers be separate entities from State level sources of funding. The Articles of Incorporation were prepared by Tim Finan and then adopted by the Advisory Council on March 12, 1980. Dr. Guy Fiscus, Marjorie Fawcett, R.N., and Dr. Robert Grooms were elected to serve as incorporators and first directors for the organization. On March 20, 1980, the Cumberland Area Health Education Center officially became incorporated as a nonprofit corporation.

On April 29, 1980, Becky Reuse, Chairman of the Bylaws Committee, presented new bylaws for the organization to the Advisory Council. The implementation of the new structure represented in the bylaws became a priority item of business for the CAHEC Annual Meeting on May 14, 1980. As of July 1, 1980, the new organizational structure is to be implemented and contracts signed with MSMETS for the provision of services in the new fiscal year.

STANDING COMMITTEES

EXECUTIVE COMMITTEE

Marjorie M. Fawcett, Chairman
Robert Grooms, Vice-Chairman
William R. Allen, Chairman of Dental Caucus
Raoul Felipa, Chairman of Nominations & Membership Committee
Deloris Gingerich, Chairman of Social Work Caucus
Raymond C. Love, Chairman of IHEC
Richard Ottmar, Chairman of Pharmacy Caucus
Rebecca Reuse, Chairman of Constitution & Bylaws Committee
Constance J. Spates, Chairman of Nursing Caucus
Terry E. Williams, Chairman of Medical Caucus

BUDGET AND PLANNING COMMITTEE

Robert Grooms, Chairman
William R. Allen
Marjorie M. Fawcett
Raoul Felipa
Deloris Gingerich
Raymond C. Love
Richard Ottmar
Rebecca Reuse
Constance J. Spates
Terry E. Williams

INTERPROFESSIONAL HEALTH EDUCATION COMMITTEE

Raymond Love, Chairman
R. J. Barrera
Anthony Bollino
Harry Bunch
William Fridinger
Margaret Keller
Helen Kohler
Hugh Malamphy
Louella McAloose
Dorothy Miller
James Sheehe
Raymond Spassil
Constance J. Spates
George Williams

CONSTITUTION AND BYLAWS COMMITTEE

Rebecca Reuse, Chairman
Henry Brown
Tim Finan
Kenneth Richmond
Terry E. Williams

NOMINATIONS AND MEMBERSHIP COMMITTEE

V. R. Felipa, Chairman
Ardell Haines
Ann A. Clauson
Dolores Gingerich
Richard Ottmar

AD HOC COMMITTEES

STUDENT AFFAIRS COMMITTEE

Louella McAloose, Chairman
Anthony Bollino
Jan Butler
Gail Mazzocco
Joseph Nelson

SEARCH COMMITTEE

Terry Williams, Chairman
Marjorie Fawcett
William Fridinger
Raymond Love
Louella McAloose
Lois Spitznagel

CENTER OFFICE COMMITTEE

Ann Clauson, Chairman
Ralph Ciampa
James Cyr
Deloris Gingerich
Ardell Haines
Manning Kimmel

CAHEC ENTITY COMMITTEE

Kery Hummel, Chairman
Ralph Ciampa
James Cyr
Tim Finan
Jane Fiscus
Paul Trichel

1979 - 1980 AHEC ADVISORY COUNCIL MEMBERSHIP

INSTITUTIONAL MEMBERS

EDUCATIONAL INSTITUTION

Ardell Haines
Allegany Community College
Nelson Guild
Paul Trichel
Frostburg State College
Frank Grivalsky
Frank Peto
RESA

FINAN CENTER

Sally Blank
Edie Hansen
Jane McMahon
Betty Myers

HEALTH DEPARTMENT

Ann Clauson
Jane Fiscus
Robert Wood

MEMORIAL HOSPITAL

Marjorie Fawcett
Guy Fiscus
Frank LaParle

SACRED HEART HOSPITAL

Raoul Felipa
Sister Jane Frances
Richard Ottmar

GARRETT MEMORIAL HOSPITAL

Laurel Grant
Kenneth Richmond
Paul Williams

AT-LARGE MEMBERS

Dentistry - William R. Allen
William Fridinger
Joseph Nelson
HSA - Kery Hummel
Medicine - Terry E. Williams
Nursing - Helen Kohler
Gail Mazzocco
Constance J. Spates
Pharmacy - Raymond C. Love
Ray Spassil
Social Work - Harry Bunch
Deloris Gingerich
Louella McAloose

R. J. Barrera
Anthony Bollino
Henry Brown
Ralph Ciampa
James Cyr
Tim Finan
Robert Grooms
Margaret Keller

Manning Kimmel
Hugh Malamphy
Rebecca Reuse
James Sheehe
J. Steven Skupas
Louis Spoerl
George Williams

EX-OFFICIO MEMBERS

E. Victor Long - Director of MSMETS

JUNE 1980

CUMBERLAND
AREA
HEALTH
EDUCATION
CENTER

ANNUAL PROGRAM REPORT

C
U M A B
H
E
C

*Working to improve health care through health manpower education in
Allegany, Garrett, and Washington Counties.*

Romeo Maione has stated, "We are living in a world of permanent change." This perspective has been indeed substantiated by the changes in the Cumberland Area Health Education Center (CAHEC) during the past year. CAHEC, which has become a corporate entity with new bylaws, has experienced change in staff leadership, added two professional staff and embarked on several planning procedures for expanding health manpower education services in Western Maryland.

CAHEC is one of three operational Area Health Education Centers in the Maryland Statewide Medical Education and Training System (MSMETS). CAHEC provided seven basic functions and services in its program year beginning July 1, 1979. These seven functions and services listed below were in compliance with the Health Professions Education Assistance Act of 1976 (Public Law 94-484) and the MSMETS legislation.

1. Continued the development of the organization as a entity separate from the University of Maryland at Baltimore (UMAB) requirements of the Federal statutes.
2. Provided placement services for 24 UMAB students/residents for a total period of 72 months.
3. Organized faculty development and continuing educational events and services for the summer and fall of 1980.
4. Finalized plans for publishing a comprehensive newsletter to keep CAHEC preceptors up-to-date with events and services sponsored by CAHEC and to provide a learning resource available to area health professionals.
5. Completed plans for organizing a supplemental library service, which includes a Med-Line hookup to perform on-site computerized bibliographic search.
6. Continued and expanded instruction and consultation services.
7. Planned for consumer and provider survey elements in a manpower needs assessment. This process will involve making contact with a random area sample of approximately 150 households in the service area.

During this fiscal year, CAHEC has given priority to the student/resident placement services part of its program. The primary thrust of the interdisciplinary program has been the reorganization of the curriculum which was begun in September and October, 1979, and brought to its present form by January, 1980. This curriculum is now a seven point program which includes the following elements:

1. Orientation to AHEC, health needs in the service area and the Cumberland AHEC program.
2. Tour of rural health care settings
3. Elective site visitations

4. Interviews with other health professionals
5. Seminars
6. Case presentations
7. Assessment

The purpose of the reorganized curriculum has been 1) to develop a more effective methodology for meeting interdisciplinary curriculum goals; 2) to assist residents and students in becoming more familiar with the diversity of living environments of the residents of the service area; 3) to facilitate increased exposure to formal information about the services in the CAHEC area; 4) to foster interdisciplinary planning of events and topics by students/residents themselves; and 5) to encourage increased exchange of information and perceptions among the program participants.

A second priority for AHEC for FY 1980 has been the continuation of instruction and consultation services particularly in services related to pharmacy and social work. Instructional services have been provided to undergraduate pharmacy students and consultation services have been provided to area medical and pharmacy professionals by the CAHEC Clinical Pharmacist. The Social Work staff has provided assistance to local professionals to keep them aware of the opportunities available to them through the UMAB School of Social Work and Community Planning. In addition, individual consultation and instruction has been provided to the master's level social work students placed in the Cumberland area.

A third priority for this program year has been the development of informational and educational services for preceptors working with the CAHEC program and also for other area health professionals. The new Information Specialist will have the responsibility of providing informational services. Among the services provided are: a comprehensive bi-monthly newsletter and calendar of events which will provide up-to-date information on resources at the CAHEC library as well as keep area health personnel informed on CAHEC and health education events throughout the service area; current news releases; and a supplemental resource library facility, including a Med-line hookup to perform on-site computerized bibliographic search.

The new Health Education Coordinator will be responsible for educational services. These services will include the development of continuing education events from an interdisciplinary approach. Symposia have been planned on the following topics: nutrition, transactional analysis, organic brain syndrome, sexual dysfunction, pain control, stress, mental health and religion, gastroenterology and general principles of teaching and clinical teaching. Additionally, a program under consideration is the providing of grand rounds for medical personnel.

Organization

On January 23, 1980, the CAHEC Advisory Council decided to incorporate the center as a private- nonprofit corporation. The Committee on CAHEC Entity, chaired by Kery Hummel, reached the decision after several months of study and deliberation regarding the need for CAHEC to comply with Federal AHEC legislation, which requires that AHEC centers be separate entities from State level sources of funding. The Articles of Incorporation were prepared by Tim Finan and then adopted by the Advisory Council on March 12, 1980. Dr. Guy Fiscus, Marjorie Fawcett, R.N., and Dr. Robert Grooms were elected to serve as incorporators and first directors for the organization. On March 20, 1980, the Cumberland Area Health Education Center officially became incorporated as a nonprofit corporation.

On April 29, 1980, Becky Reuse, Chairman of the Bylaws Committee, presented new bylaws for the organization to the Advisory Council. The implementation of the new structure represented in the bylaws became a priority item of business for the CAHEC Annual Meeting on May 14, 1980. As of July 1, 1980, the new organizational structure is to be implemented and contracts signed with MSMETS for the provision of services in the new fiscal year.

1979-1980 AHEC Advisory Council Membership

Institutional Members

Educational Institution

Ardell Haines
Allegany Community College

Nelson Guild
Paul Trichel
Frostburg State College

Frank Grivalsky
Frank Peto
RESA

Finan Center

Sally Blank
Edie Hansen
Jane McMahon
Betty Myers

Health Department

Ann Clauson
Jane Fiscus
Robert Wood

Memorial Hospital

Marjorie Fawcett
Guy Fiscus
Frank LaParle

Sacred Heart Hospital

Raoul Felipa
Sister Jane Frances
Richard Ottmar

Garrett Memorial Hospital

Laurel Grant
Kenneth Richmond
Paul Williams

At-Large Members

Dentistry - William R. Allen
William Fridinger
Joseph Nelson

At-Large Members (continued)

HSA - Kery Hummel

Medicine - Terry E. Williams

Nursing - Helen Kohler
Gail Mazzocco
Constance J. Spates

Pharmacy - Raymond C. Love
Ray Spassil

Social Work - Harry Bunch
Deloris Gingerich
Louella McAloose

At-Large Members

R. J. Barrera
Anthony Bollino
Henry Brown
Ralph Ciampa
James Cyr
Tim Finan
Robert Grooms
Margaret Keller
Manning Kimmel
Hugh Malamphy
Rebecca Reuse
James Sheehe
J. Steven Skupas
Louis Spoerl
George Williams

Ex-Officio Members

E. Victor Long - Director of MSMETS

STANDING COMMITTEES

EXECUTIVE COMMITTEE

Marjorie M. Fawcett, Chairman
Robert Grooms, Vice-Chairman
William R. Allen, Chairman of Dental Caucus
Raoul Felipa, Chairman of Nominations & Membership Committee
Deloris Gingerich, Chairman of Social Work Caucus
Raymond C. Love, Chairman of IHEC
Richard Ottmar, Chairman of Pharmacy Caucus
Rebecca Reuse, Chairman of Constitution & Bylaws Committee
Constance J. Spates, Chairman of Nursing Caucus
Terry E. Williams, Chairman of Medical Caucus

BUDGET AND PLANNING COMMITTEE

Robert Grooms, Chairman	Raymond C. Love
William R. Allen	Richard Ottmar
Marjorie M. Fawcett	Rebecca Reuse
Raoul Felipa	Constance J. Spates
Deloris Gingerich	Terry E. Williams

INTERPROFESSIONAL HEALTH EDUCATION COMMITTEE

Raymond Love, Chairman	Hugh Malamphy
R. J. Barrerra	Louella McAloose
Anthony Bollino	Dorothy Miller
Harry Bunch	James Sheehe
William Fridinger	Raymond Spassil
Margaret Keller	Constance J. Spates
Helen Kohler	George Williams

CONSTITUTION AND BYLAWS COMMITTEE

Rebecca Reuse, Chairman
Henry Brown
Tim Finan
Kenneth Richmond
Terry E. Williams

AD HOC COMMITTEES

STUDENT AFFAIRS COMMITTEE

Louella McAloose, Chairman
Anthony Bollino
Jan Butler
Gail Mazzocco
Joseph Nelson

CENTER OFFICE COMMITTEE

Ann Clauson, Chairman
Ralph Ciampa
James Cyr
Deloris Gingerich
Ardell Haines
Manning Kimmel

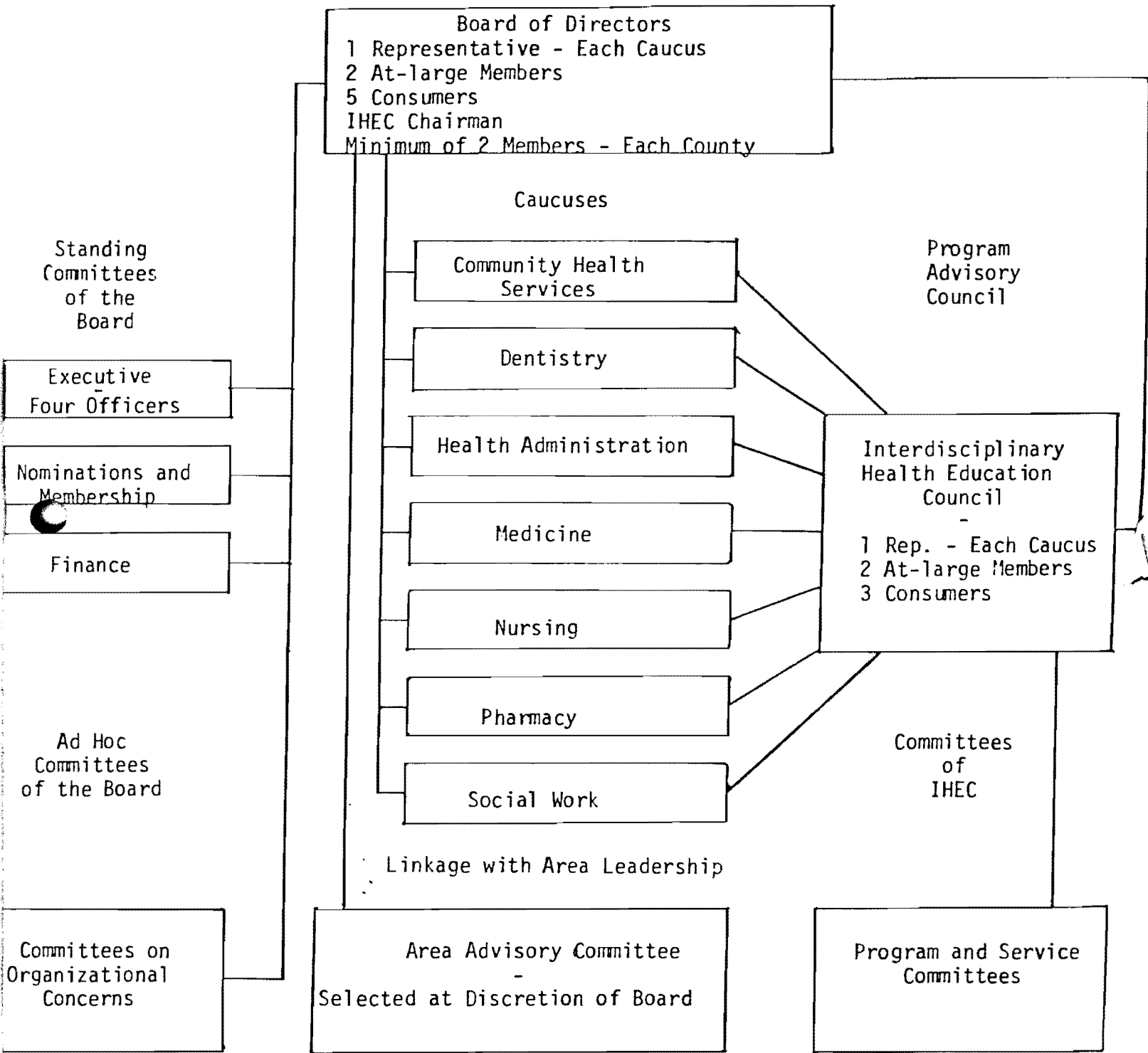
SEARCH COMMITTEE

Terry Williams, Chairman
Marjorie Fawcett
William Fridinger
Raymond Love
Louella McAloose
Lois Spitznagel

CAHEC ENTITY COMMITTEE

Kery Hummel, Chairman
Ralph Ciampa
James Cyr
Tim Finan
Jane Fiscus
Paul Trichel

CUMBERLAND AREA HEALTH EDUCATION CENTER
INCORPORATED



CAHEC Resident/Student Placements from UMAB

July 1, 1979 - June 30, 1980

<u>Name</u>	<u>School</u>	<u>Preceptor</u>	<u>Location</u>
Calvin Plitt	Medical Resident	Dr. Wayne Spiggle	Braddock Medical Group
Dena Hixon	Medicine	Dr. Anthony Bollino, Jr.	Private Office
Bette Carlson	Social Work	Mr. James Stanton	Health Systems Agency
Mark Lannon	Social Work	Mr. George Gutches	Health Department
Karen Reuster	Social Work	Ms. Patricia Wright	Sacred Heart Hospital
Wynn Williams	Social Work	Ms. Patricia Wright	Sacred Heart Hospital
Ed Koza	Medical Resident	Dr. Raoul Felipa	Private Office
Michele Uhl	Medical Resident	Dr. Guy Fiscus	Private Practice
Ben Werner	Medical Resident	Dr. Walid Hijab	Private Practice
Charles Graefe	Pharmacy	Dr. Raymond Love	Patient Care
Jon Warner	Pharmacy	Dr. Raymond Love	Patient Care
Steven Schwartz	Medical Resident	Dr. Wayne Spiggle	Braddock Medical Group
Barry Wohl	Medical Resident	Dr. Michael Glick	Braddock Medical Group
Michael Lunde	Medicine	Dr. Raoul Felipa	Braddock Medical Group
Debbie Eckart	Nursing	Ms. Gail Mazzocco	Dr. Strauss' Office
Moira Garvey	Social Work	Ms. Betty Myers	Finan Center
Dot Jones	Social Work	Ms. Patricia Wright	Sacred Heart
Theresa Koppel	Nursing	Ms. Gail Mazzocco	Sacred Heart
Nick Memole	Social Work	Mr. George Gutches	Health Department
Norma Spence	Social Work	Mr. James Sheehe	Memorial Hospital
Tony Riley	Medical Resident	Dr. George Breza	Braddock Medical Group
Mary Meyer	Pharmacy	Dr. Raymond Love	Memorial
Gail Thomas	Pharmacy	Dr. Raymond Love	Potomac Valley Pharmacy
Roberta Brown	Pharmacy	Dr. Raymond Love	Finan Center
Rick Diamond	Medical Resident	Dr. Victor Mazzocco	Braddock Medical Group
Jerry Levine	Medical Resident	Dr. Guy Fiscus	Private Office
Scott Robinson	Dental	Dr. William Fridinger	Itinerant

UMAB Coordinators

Dentistry - Dr. George C. Williams, III
 Ambulatory Care Curriculum - Dr. Julian W. Reed
 Nursing - Ms. Donna Dorsey
 Ms. Gail Mazzocco

Pharmacy - Dr. Raymond C. Love, Mr. Marvin Oed
 Primary Care Programs - Dr. William S. Spicer, Jr.
 Dr. James A. Quinlan, Jr.
 Social Work - Ms. Dorothy Miller
 Ms. Louella McAloose