

Western Maryland Area Health Education Center

Annual Report 2015



WESTERN MARYLAND
AHEC

A decorative graphic on the right side of the page consisting of numerous squares of various shades of blue (light, medium, and dark) arranged in a staggered, pixelated pattern that extends from the middle of the page down to the footer.

Western Maryland Area
Health Education Center

www.wmahec.org

Improving access to and promoting quality in healthcare through educational and other partnerships

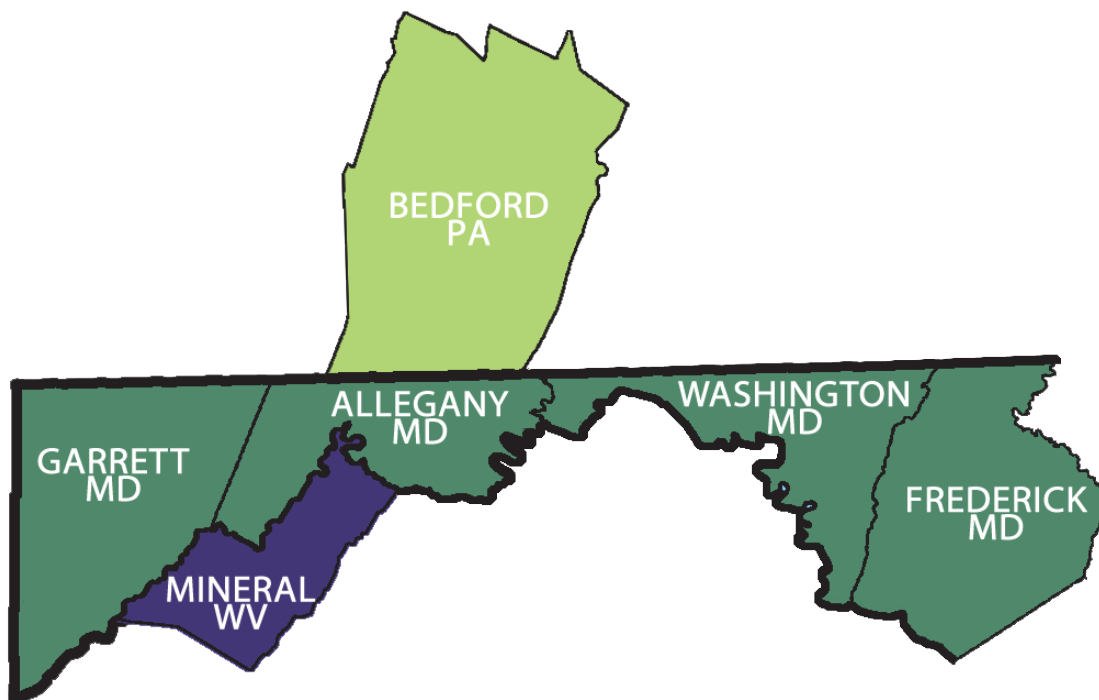
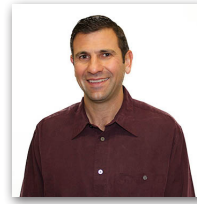


TABLE OF CONTENTS

Letter	3
Exploring Careers in Health Occupations	4
Clinical Education	5
Geriatric Programs.....	8
Caucuses and Continuing Education	10
Human Papillomavirus (HPV) Project	11
Mountain Health Alliance.....	12
Staff.....	13
Annual Awards	14
Board of Directors	16
Funding Highlights.....	17-19

LETTER FROM THE BOARD CHAIR AND EXECUTIVE DIRECTOR



MICHAEL MOTTER Psy.D.
Chair, Board of Directors



SUSAN K. STEWART
Executive Director

DEAR FRIENDS AND SUPPORTERS,

As we reflect on Fiscal Year 2015 at the Western Maryland Area Health Education Center (AHEC), we can say that it was a year of wonderful surprises, especially regarding funding. As we faced the specter of downsizing in order to maintain financial solvency, we received notice of a significant grant award to continue the work of the Mountain Health Alliance. We received notice that we were one of ten entities in the nation awarded funds from the American Honda Foundation, for the Exploring Careers in Health Occupations Program. And we successfully competed to be the Region B Coordinator for the National AHEC's Centers for Disease Control and Prevention contract to conduct provider education on Human Papilloma Virus immunizations. Region B includes six states and the District of Columbia. These three awards are highlighted here because they are very difficult to obtain, give us national recognition, and reflect the level of dedication to the agency mission displayed each day by the WMAHEC staff.

One huge downturn in the year was that the Health Resources and Services Administration deemed Allegany County as non-rural, thus eliminating the county's ability to obtain health grant funds. However, a coalition of partners that included the WMAHEC; the Maryland Rural Health Association; and Diane D. Romaine, DMD worked with Senator Barbara Mikulski's office to regain the rural status, and succeeded. Many thanks to Senator Mikulski for her tireless work in Congress fighting for Allegany County. Because of this effort, rural communities across the nation are still eligible to obtain much needed health-related funds.

This year's transitions included both a large staff turnover and an increase in personnel, but we have already gelled as a team and are moving the mission and vision forward. Western Maryland AHEC's continued programs and services include quality continuing education and training courses, support of health professional Caucuses, student and medical resident clinical rotations, geriatric education and interprofessional experiences at long-term care sites, programs that give high school students hands-on experiences in healthcare settings as well as job shadowing opportunities, and broadened access to oral and behavioral health services for low income adults. We continue to work with the Maryland Rural Health Association and our local, state, and national political representatives to advocate for rural healthcare and health professions training programs.

So, it is our pleasure to celebrate and thank our community partners, Board of Directors, and staff for pursuing diverse healthcare and related programs that benefit our community. We strive to encourage and promote partnerships and programs that we can all be proud of. We are looking forward to maintaining and strengthening current programs as well as developing new and innovative ones.

Sincerely,

Michael Motter

Michael Motter

Susan K. Stewart

Susan K. Stewart



Melissa Clark
Program Coordinator

ECHO

Exploring Careers in Health Occupations

This year nearly **200 students** from rural Maryland were exposed to job opportunities in the health field through the ECHO Program.

Western Maryland AHEC's signature health careers pipeline program, Exploring Careers in Health Occupations (ECHO), celebrates 10 years of nurturing students' interest in becoming health professionals.

The highly interactive, week-long summer residential program provides high school students with a variety of learning opportunities through presentations, tours, job shadowing, and hands-on learning. This year four weeks of the summer ECHO Program were held, which included 101 and 201.

Students participate in tours at University of Maryland School of Medicine, University of Maryland Shock Trauma, Western Maryland Health System, Garrett Regional Medical Center, Garrett College, Allegany College of Maryland, and Maryland State Police Trooper 5.



Public Health career presentations and hands-on activities are provided at the Allegany County and Garrett County Health Departments as well as other locations. Throughout the program, students reside at Frostburg State University or Garrett College to experience college life. The students also volunteer in geriatrics through Goodwill Mennonite Services. Teambuilding and understanding cultural competencies are built into the program, as is CPR training. It is an educational and fun week for all involved.



ECHO graduates may further their health career exploration in ECHO 201, which consists of intensive job shadowing with a variety of local health care providers. Students also participate in an Evidence Collection workshop, a community service project at Goodwill Mennonite Home, and a day trip to West Virginia University and Ruby Memorial Hospital.

ECHO 301 is a year-round component that allows students to continue with job shadowing in their area(s) of interest. This is done with former ECHO 101 and 201 students and also through local high school programs, including Science & Project Lead the Way: Biomedical classes from Mountain Ridge, Allegany, and Fort Hill high schools. Several 301 students come from Potomac State College, Frostburg State University, Allegany College of Maryland, and other universities and colleges. These students perform many hours of shadowing in rural Maryland.

The many providers and partners make ECHO a truly unique program that continues to grow and evolve each year.



Terri Socha
Program Coordinator

CLINICAL EDUCATION

Where are they now?

12% Federally Designated Rural Area

25% Medically Underserved Area

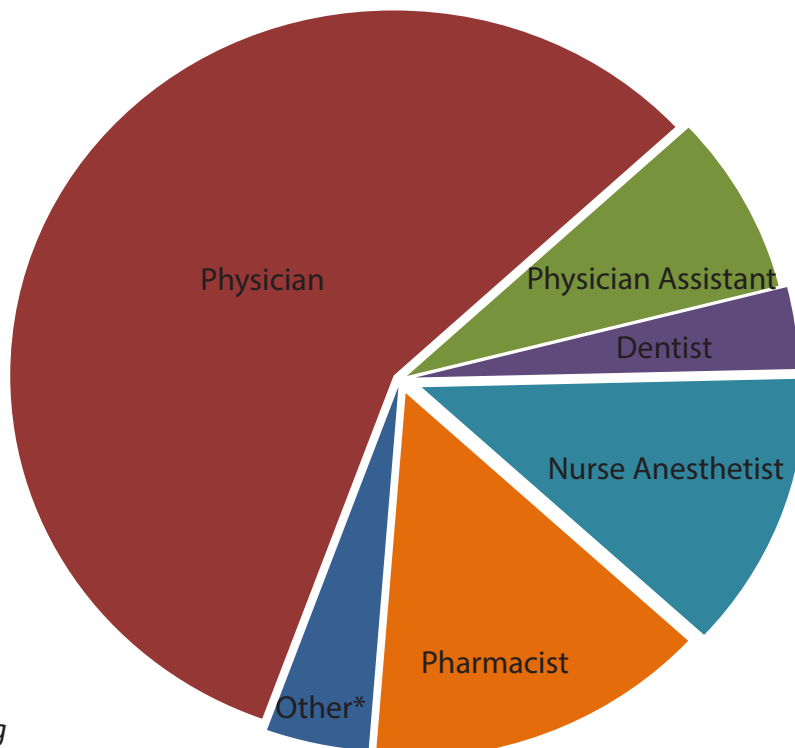
25% Primary Care HPSA

40% Maryland

One hundred thirty nine (139) health professions students representing nine (9) disciplines from twenty (20) different health professions programs completed rotations in Garrett, Allegany, Washington, and Frederick counties and nearby areas of West Virginia, totaling 749 weeks of clinical education.

The Clinical Education program facilitates:

- Students work in patient-centered practice sites with skilled, knowledgeable, and dedicated health professionals.
- They learn about the unique challenges, rewards, and opportunities for healthcare practice in rural and small town communities and increase their cultural sensitivity to rural/underserved populations.
- Students from Western Maryland complete some of their health professions clinical rotations in the area, allowing them to reconnect to practice opportunities in their home community.
- Teaching future health professionals enables area health practitioners in their disciplines to connect with new approaches being taught in health professions programs.



* Nurse Practitioners, Physical Therapy, Occupational Therapy, Psychology and Professional Counseling

Total Students: **139**

RECENT CLINICAL EDUCATION OUTCOMES

- Evie Brunson, Pharm.D., a UMB School of Pharmacy graduate and former AHEC student, has taken a position at Western Maryland Health System.
- Dipti Mistry, M.D., completed a 2010 School of Medicine AHEC rotation at Smithsburg Family Medical Center in Washington County. She has returned to join their practice.
- Sara Ly, Pharm.D., who completed an AHEC rotation, has returned for a one year Clinical Pharmacy Residency at Western Maryland Health System.
- Lucinda Everett, CRNP, a local student, completed some of her rotations through AHEC and is now practicing at Braddock Medical Group.
- Three 3rd year Primary Care Track students returned to Western Maryland for their 3rd clerkships, two in Pediatrics and one in Family Medicine.

Western Maryland health professionals provided
29,960 volunteer hours of teaching.



UMSOM Primary Care Track students reconnect during rotations in Garrett County.



UMSOM students, talk with FSU Pre-Med Society students about preparing for medical school.

PARTICIPATING PRECEPTORS

Robert Barth, Pharm.D.
 Anthony Bollino, M.D.
 Ken Buczynski, M.D.
 Peter Bui, M.D.
 Julie Caler, Pharm.D., CGP
 Vincent Cantone, M.D.
 Robert Carpenter, M.D.
 Thomas Chappell, M.D.
 Abdul Cheema, M.D.
 K. Jill Ciccarelli, M.D.
 James Crable, R.Ph.
 Wayne Crowder, M.D.
 Dan Delmonte, OTR/L
 Andrew Foy, M.D.
 Joe Glass, R.Ph.
 Rosario Gonzaga, M.D.
 Robert Goralski, M.D.

Wes Hartley, PA-C
 Janet Hendershot, Ph.D.
 Gerard Herpel, P.D.
 Bobbi Hilker, Pharm.D.
 Audra Houser, N.P.
 Erica Itnyre, CRNA
 Lisa Jenkins, CRNP
 Kirk Jones, Pharm.D.
 Margaret Kaiser, M.D.
 William Kerns, M.D.
 Shiv Khanna, M.D.
 Jennifer Lee-Steckman, CNM, M.S.N.
 Michael Lerner, M.D.
 Michael Levitas, M.D.
 Jennifer Long, CRNA

Celestino Menchavez, M.D.
 Elmaslias Menchavez, M.D.
 Mary Money, M.D.
 Barbara Monn, PA-C
 James Orth, Ph.D.
 John Paul, DPT, ATC, SCS
 Ghazala Qadir, M.D.
 Samuel Rao, M.D.
 Lance Rhodes, Pharm.D.
 Diane D. Romaine, D.M.D.
 Sajal Roy, Pharm.D.
 Sanjay Saxena, M.D.
 Huma Shakil, M.D.
 Christine Sturtz, CRNA
 Mariel Viray, M.D.
 Gary Wagoner, M.D.
 Leon Weaver, M.D.



Preceptors were recognized for their service to their community & WMAHEC (pg 14).



Terri Socha
Program Coordinator

GAIT: Geriatric Assessment Interdisciplinary Team

GAIT projects significantly increase the number of USM health professions students who are exposed to the **rural/underserved** areas of Maryland. The GAIT projects allow students, without access to rural clinical rotations, an opportunity to see rural/underserved practice sites.

Geriatric Assessment Interdisciplinary Team projects are funded by a University System of Maryland Redeployment Grant to the Geriatrics and Gerontology Education and Research (GGEAR) program at the University of Maryland Baltimore to provide an interdisciplinary geriatric team training opportunity for students in health professions programs at University System of Maryland schools.



GAIT students team reviews records and interviews host site resident.

Each project is focused on a topic in geriatric care and is hosted by a geriatric care site in Western Maryland. Students complete activities to increase their understanding of challenges faced by older adults as they age, and to enhance their interdisciplinary geriatric assessment and health care team skills. Each small interdisciplinary team of students

interviews/assesses older adults the site assigns to the teams and reviews the patient records. Each team then presents their assessment and suggestions to staff at the host site.



GAIT students experience Activities of Daily Living with simulated visual and fine motor impairments.

The projects are designed to increase interest in working with older adults in rural communities in Maryland. At the conclusion of FY15 GAIT projects in Western Maryland, 81% of students said they were interested in, or more open to, opportunities in geriatrics and 78% said they were interested in, or more open to, rural practice.



GAIT student teams present and discuss interprofessional assessment with host site staff.

Each GAIT project had participants from 4 or more disciplines, representing:

- Frostburg State University
- Salisbury University
- Towson University
- University of Maryland Baltimore
 - Dental School
 - School of Medicine
 - School of Nursing
 - School of Pharmacy
 - School of Social Work
- University of Maryland Eastern Shore

In FY 2015, health professions students participated in one of six GAIT projects in Western Maryland.

GGEAR: Geriatrics & Gerontology Education & Research

The Geriatrics and Gerontology Education and Research Program at the University of Maryland Baltimore directs a University System of Maryland Redeployment Grant that, in partnership with WMAHEC, supports collaborative implementation of interprofessional geriatrics continuing education based on community identified issues and topics, and education and resources for care providers addressing health care needs of Western Maryland older adults.

Reba Cornman, MSW, Director of GGEAR, provides ongoing mentoring and support for Western Maryland initiatives and programs by meeting with Western Maryland community partners to identify health professional educational needs and facilitates statewide contact for speakers resources. www.umaryland.edu/gerontology

- Three hundred seven (307) participants attended Continuing Education Programs. Continuing Education hours were provided to Nurses, Nurse Practitioners, Physicians, Physician Assistants, and Social Workers. Behavioral Health, Recreation Therapists, Case Managers, Wellness Coordinators, and other health professionals providing services to older adults also attended these programs.

- > Interprofessional Approaches to the Care of Complex Older Adults
- > Communicating Effectively with Older Adults and Their Families
- > Alzheimer's Disease Updates: What's New on Assessment, Diagnosis, and Medications
- > Managing Difficult Behaviors: From Use of Behavioral Therapies to Use of Psychotropic Medications

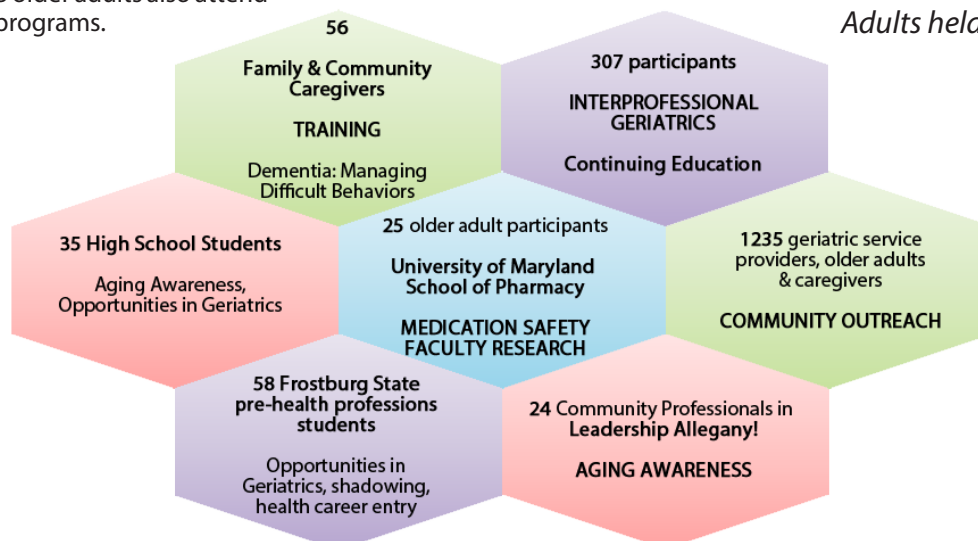
- FY 2015 marks the fifth year of a continuing collaboration of Johns Hopkins Geriatrics Education Center Consortium, the GGEAR program, and WMAHEC to bring Alzheimer's Updates Series to health professionals in Western Maryland in partnership with Western Maryland Health System.
- Partnerships leverage community resources to provide affordable, accessible educational opportunities.



Alzheimer's Disease Updates: What's New on Assessment, Diagnosis and Medications held in Cumberland, MD.



Interprofessional Approaches to the Care of Complex Older Adults held in Hagerstown, MD.





Joy Taylor
Program Coordinator

Because of the collaborative relationship established between these Caucuses, health care organizations, and educational institutions, the continuing education program continues to serve the needs and interests of our local providers. In cooperation with these partners, training needs are assessed and programs are developed and conducted using national, regional, and local experts as lecturers and consultants.



Caucuses & Continuing Education

The dedication and commitment provided to WMAHEC from the members of the twelve health **professional** Caucuses continues to be the core of the continuing education program success.

During Fiscal Year 2015, 67 continuing education courses were sponsored or co-sponsored for a total of 2446 health professionals trained, awarding 188 credit hours. Another 22 non-credit programs were conducted for 283 participants. Presentation formats included seminars, workshops, lectures, video conferences, and telecasts.



By providing quality, diverse, and affordable educational opportunities, WMAHEC is assisting with the retention of health professionals in the region as well as helping them to improve the health care provided to the citizens of Western Maryland. During any given fiscal year, the number of programs conducted and professionals served is commensurate with the amount of grant funds available.

The health professionals of Western Maryland AHEC's caucuses volunteered a total of **877 hours** in FY2015.

WMAHEC Caucuses

Dental • Dietetic • Massage Therapy • Medical • Nurse Practitioner • Nursing • Occupational Therapy • Psychology & Professional Counseling • Physical Therapy • Allegany/Garrett County Social Work • Washington County Social Work



HPV Regional Coordinators with National Training Center Leadership Team

Western Maryland AHEC Leads Region's Efforts to Raise HPV Immunization Rates through Provider Education

The National AHEC Organization (NAO) received funding from the Centers for Disease Control and Prevention for a project to provide education to health professionals regarding the Human Papillomavirus (HPV) vaccine. Through this cooperative agreement, NAO will strengthen HPV vaccination recommendations and elevate awareness of HPV vaccinations and their role in cancer prevention.

Western Maryland AHEC Program Coordinator Joy Taylor is one of ten HPV Regional Project Coordinators selected to provide connections to groups and organizations, support the usage of materials, and promote promising practices for state entities to provide training to health professionals. Joy oversees HPV initiatives in Maryland, Delaware, Pennsylvania, Virginia, West Virginia, New Jersey and the District of Columbia.

Program goals include:

- Provide clinician outreach and training
- Disseminate educational materials
- Form and increase strong partnerships
- Push prioritization of HPV vaccination efforts to promote cancer prevention and bolster the number of HPV vaccinations administered in the region.

Mountain Health Alliance



Kimi-Scott McGreevy
Network Director, MHA



Katie Salesky
Workforce Chair, MHA



Dorian Birkholz
Community Health
Worker, MHA

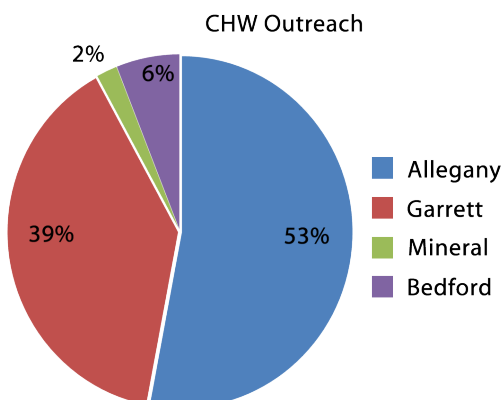


Mindy Dodrill
Community Health
Worker, MHA



The Mountain Health Alliance (MHA) is a Network of public health care agencies, hospitals, and community organizations that works to broaden access to health care, especially for low income and/or uninsured, underserved adults.

Over the past year, MHA trained 59 primary care providers from 18 practice sites on conducting oral health exams. An additional 67 primary care providers were sent information regarding online training. A total of 76 health professions students attended



oral health and cultural competency trainings.

To expedite direct services and reach as many in need as possible, MHA created Emergency Department Dental Referral Programs with Garrett Regional Medical Center in Oakland, Maryland, and WVU Medicine Pottomac Valley Hospital in Keyser, West Virginia. To date, a total of 20 referrals have been received.

In order to provide care for all oral health referrals, MHA staff has secured the participation of a number of private dental practitioners in the service area. Three dentists in Keyser, WV, two dentists in Fort Ashby, WV, one dentist in Hancock, MD, and three dentists in Garrett County, MD, see MHA referrals. All participating dentists have agreed to see patients at a rate of \$150 per hour.

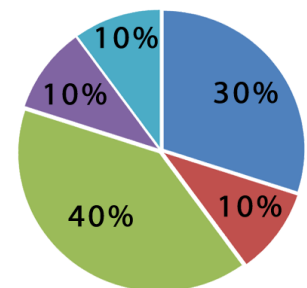
MHA service dollars were also used to support services provided patients via Allegany Health Right (AHR), a member of MHA.

MHA's Community Health Workers provided all clients referred to MHA with follow-up educational information and support. They also worked extensively to provide outreach on issues regarding both oral and

behavioral health. The CHWs reached 764 adults through their community outreach efforts.

MHA also created a referral program with the Western Maryland Health System's Behavioral Health Department. Upon discharge, staff at the Behavioral Health unit refers patients with less serious issues to MHA's Community Health Workers for additional support as the patients re-enter the community. The CHWs work with WMHS's Case Managers.

Referrals Received



- Mineral
- Allegany
- Garrett
- Washington
- Other

STAFF

Western Maryland AHEC's mission is accomplished by a group of **highly professional** and **dedicated** individuals who work to meet the goals and objectives of each program.



Susan Stewart
Executive Director



Dorian Birkholz
Community Health Worker



Jackie Booth
Administrative Specialist



Christian Brooks
Program Coordinator



Melissa Clark
Program Coordinator



Mindy Dodril
Community Health Worker



Nancy Folk
Volunteer



Amanda Heavener
Administrative Specialist



Christina Mackereth
Administrative Specialist



Kimi-Scott McGreevy
Program Coordinator



Shawn Pillai
Program Coordinator



Renae Powell
Administrative Specialist



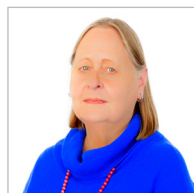
Tina Roberson
Finance/HR Coordinator



Rhonda Rosley
Program Coordinator



Katie Salesky
Program Coordinator



Terri Socha
Program Coordinator



Joy Taylor
Program Coordinator



Jen Thomas
Program Coordinator

2015 ANNUAL AWARDS



Menchavez Pediatrics received the Distinguished Service Award in recognition of their commitment to the Western Maryland AHEC mission through extensive history of high quality training and mentoring of students and their support of and involvement with the Board of Directors. Pictured from left to right is Molly Moran, CRNP; Elmaslias Menchavez, MD; presenter Charlie Breakall, LCSW; and Chel Menchavez, MD.



Jay A. Perman, MD, received the John M. Dennis Award in recognition of his support of the Western Maryland AHEC mission through his commitment to community-based training in the Western Maryland AHEC'S service area and his support for UMB students to provide high-quality health care and human services within a team-based model.



Mary Money, MD, received the Jane A. Fiscus, MD Community Health Leadership Award. Dr. Money's extraordinary principles of leadership, coordination of services, interdisciplinary training, foresight, courage, and creativity championed and demonstrated her commitment to the improvement of the health and well-being of the citizens of Washington County and the surrounding area. She is pictured with presenter Rodney Glotfelty, RS, MPH.



Hospice of Garrett County INC, received the Award for Excellence in Aging Services in recognition of 30 years of providing end-of-life care for patients and their families, and contributing to inter-professional education of health professions students. Pictured front, left to right, Reba Cornman, MSW, GGEAR Director, Donna Brennenman, Hospice of Garrett County Executive Director, and Brenda Butscher, retired Executive Director. In second row, Hospice staff, Ashley Kamp, Grace Bolyard, RN, Director of Clinical Services, Amy Welch, and Lisa Friend.



Sue V. Raver, MD, received the Donald L. Spencer Award in recognition of organizational dedication and commitment to the values and ideals that are representative of WMAHEC Executive Director, Don Spencer. Dr. Raver is pictured with former WMAHEC Executive Director Don Spencer.



Lee B. Ross, Ph.D., received the Psychology and Professional Counseling Caucus special Lifetime Achievement Award in recognition of his achievements and service to the community since 1971. Pictured are members of Dr Ross's family accepting the award with presenters Paul McCusker, Ph.D. and Antoinette Wiseman, Ph.D.



Cathy Chapman, MS, CRNP, received the Nurse Practitioner of the Year award from the Nurse Practitioner Caucus for her outstanding leadership, dedication, and commitment to excellence. She is pictured with presenter Audra Houser, CRNP.



Corrin Lamm, MS, CRNP, received the Nurse Practitioner of the Year award from the Nurse Practitioner Caucus for her outstanding leadership, dedication, and commitment to excellence. She is pictured with presenter Audra Houser, CRNP.



April Busch, LCSW-C, received the Social Worker of the Year award from the Allegany / Garrett County Social Work Caucus in appreciation of her faithful and dedicated service to the citizens of Allegany County. She is pictured with presenter Jennifer Glotfelty, LBSA.



Dennis Tipton, LCSW-C, received the Social Worker of the Year award from the Allegany / Garrett County Social Work Caucus in appreciation of his faithful and dedicated service to the citizens of Allegany County. He is pictured with presenter Jennifer Glotfelty, LBSA.



John Kenney, LCSW-C, received the Social Worker of the Year award from the Washington County Social Work Caucus in appreciation of his faithful and dedicated service to the citizens of Washington County. He is pictured with presenter Diane Mitchell, MSW, LGSW-C.



Michelle Harvey, RN, BSN, received the Nurse of the Year award from the Nursing Caucus for her outstanding leadership, dedication, and commitment to excellence. She is pictured with presenter Angela Spataro, RN, BSN.



Kay Leigh RD, LDN, received the Dietician of the Year award for exceptional service and commitment to the clients, the community, and the professions. She is pictured with presenter Jennifer Wilson, M. Ed, RD, LDN.

BOARD OF DIRECTORS

Chairperson: Michael Motter, PsyD
 Vice Chairperson: Jennifer Glotfelty, LBSA
 Secretary: Sue Raver, MD/Lesa Diehl, LCSW-C
 Treasurer: Faron Garver, BS, MBA

Mark Boucot, MBA, FACHE	Garrett County Memorial Hospital
Charles Breakall, LCSW	Social Work, Retired
Cindy Bridges, RN, MS, MBA	Western Maryland Health System
Richard Colgan, MD	University of Maryland School of Medicine
Lesa Diehl, LCSW-C	Allegany County Health Department
Faron Garver, MBA	Human Resources Development Commission
Jennifer Glotfelty, LBSA, CIRS-A	Human Resources Development Commission
Y. Michelle Harman, MEd, NBCT	Garrett County Board of Education
Fredric Hirsch, LCSW-C	Meritus Medical Center
Joe Hoffman, PhD	Frostburg State University
Paula Jilanis, MA, LMT, RMT	Allegany College of Maryland
Elaine Keane, MS, OTR	School Therapy Services
Elizabeth Lamm, Esq	Attorney
Bill Mackay, RPh, MPA	Pharmacist, Retired
Rod MacRae, MA, MPH	Washington County Health Department
Celestino Menchavez, MD	Physician
Michael Motter, PsyD	Thomas B. Finan Center
George A. Phillips, BS, MEd	Washington County Board of Education
Timothy Purdy, MSN, CRNP	Hyndman Area Health Center
Sue V. Raver, MD	Health Officer, Allegany County Health Department
Diane Romaine, DMD	Dentist
Rebecca Ruppert, M.Ed	Allegany College of Maryland
Karin Savage, PT, DPT	Physical Therapy Director, Allegany College of Maryland
Brooke T. Schneider, MS, LPC, MAC	Garrett County Health Department
Jean Seifarth, PhD, RN, PMHCNS-BC	Western Maryland Health System
R. Anne Sheetz, RN, MS, MA, LCPC	Allegany Counseling Consulting Services
Jennifer Wilson, MEd, RD, LDN	Allegany County Health Department

Volunteer Hours: **84.5**

Maryland AHEC Program

University of Maryland School of Medicine

Jay Perman, MD

President, University of Maryland, Baltimore

E. Albert Reece, MD, PhD, MBA

Dean and Vice President for Medical Affairs, University of Maryland School of Medicine

Richard Colgan, MD

Maryland AHEC Program Director
 Professor and Vice Chair of Medical Student Education and Clinical Operations
 University of Maryland School of Medicine
 Department of Family and Community Medicine
 Director, Maryland Area Health Education Center

Nikki Southall, MD

AHEC Course Director
 Associate Residency Program Director
 Director of Ambulatory Education
 Director, Preliminary Program
 Department of Internal Medicine

FUNDING HIGHLIGHTS

%	Sources	\$	Amount
36%	Maryland Statewide Medical Education & Training System (MSMETS)		324,000.00
23%	Mountain Health Alliance 2 - HRSA Grant		209,256.44
11%	Department of Health and Mental Hygiene (DHMH)		101,595.00
9%	Point Of Service AHEC Funding		82,252.03
6%	Local Administrative & Program Development Fund		50,543.00
5%	Geriatric Assessment Interdisciplinary Team (GAIT) Project		42,500.00
3%	Mountain Health Alliance - HRSA Grant		29,638.24
3%	American Honda Foundation		27,816.32
3%	Geriatrics and Gerontology Education and Research (GGEAR)		25,000.00
1%	Primary Care Track		11,420.11
			\$ 904,021.14



BALANCE SHEET JUNE 30, 2015

ASSETS

\$ Amount

Current Assets

GENERAL CHECKING	219,975.80
CAUCUS CHECKING	9,819.25
PETTY CASH	55.00
NYL FIXED INTEREST ACCOUNT	62,023.78
NYLIFE SECURITIES/EAGLE STRATEGIES	150,609.16
DUE FROM GRANTS	124,063.45
PREPAID PROGRAM MATERIALS	4,424.41
PREPAID RENT	4,894.68

TOTAL Current Assets 575,865.53

Fixed Assets

LEASEHOLD IMPROVEMENTS	152,525.10
FURNITURE & EQUIPMENT	294,177.17
ACCUMULATED DEPRECIATION	(114,932.08)

TOTAL Fixed Assets 331,770.19

Other Assets

DEPOSITS	525.00
----------	--------

TOTAL Other Assets 525.00

TOTAL ASSETS 908,160.72

LIABILITIES

Current Liabilities

TRADE PAYABLES	27,123.54
ACCRUED FICA	1,029.06
STATE UNEMPLOYMENT PAYABLE	570.25
ACCRUED PAYROLL	13,307.54
ACCRUED PENSION PLAN	1,064.59
AFLAC INSURANCE PAYABLE	149.80
COLONIAL LIFE INSURANCE PAYABLE	(197.67)
ACCRUED VACATION	7,786.87
FICA ON ACCRUED VACATION	595.70
MEDICAL REIMBURSEMENT FUND	737.28
REFUNDABLE ADVANCE	9,683.68
DEFERRED RENT LIABILITY	9,941.00

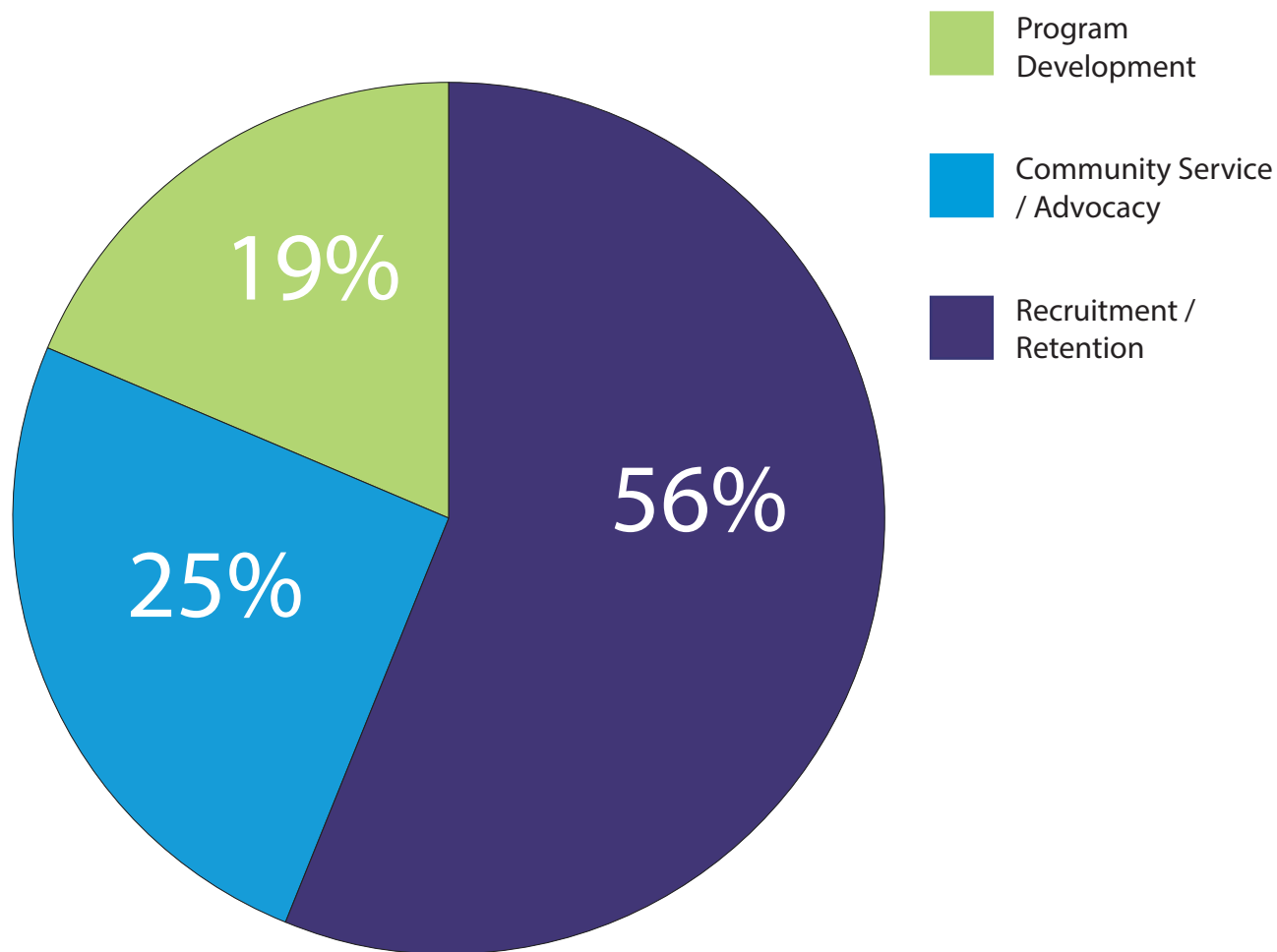
TOTAL Current Liabilities 71,791.64

TOTAL LIABILITIES 71,791.64


CAPITAL

GENERAL FUND - RESTRICTED	14,246.00
GENERAL FUND - UNRESTRICTED	646,564.89
Year-to-Date Earnings	175,558.19
TOTAL CAPITAL	836,369.08
TOTAL LIABILITIES & CAPITAL	908,160.72

PROGRAMMATIC EXPENSE CATEGORIES



To view our fiscal year 2015 financial report click [here](#).



WESTERN MARYLAND AHEC
39 Baltimore Street, Suite 201
Cumberland, MD 21502

Phone: 301.777.9150
Fax: 301.777.2649

<http://www.wmahec.org>